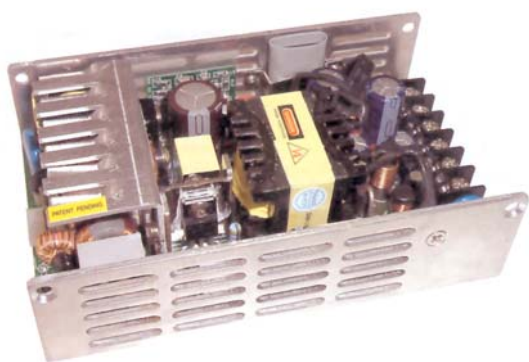




# General Purpose (Universal)

## PFC + 100W SNP-U10 Series



### Description:

The SNP-U10 series is a 100 watts convection cooling and in U-shape chassis switching power supply.

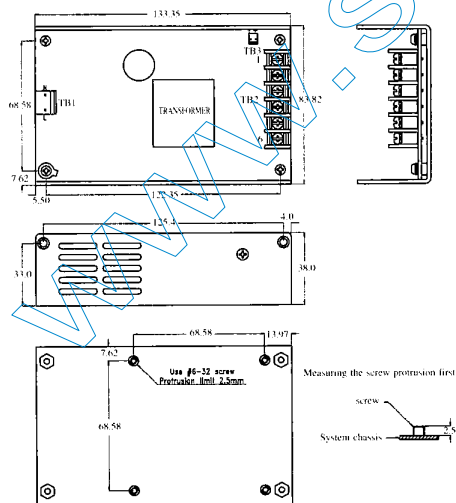
With soft-switching topology, low-profile height fit 1U constraints and high efficiency. It is designed for use in general purpose.

### General Specifications:

Input voltage .....	85 VAC to 264 VAC
Input frequency .....	47 Hz to 63 Hz
Inrush current (cold start) .....	30A at 115VAC
	60A at 230VAC
Outputs .....	See output table
Efficiency .....	>80%
Hold up time .....	>20 ms
	at rated load and 115VAC
Over load protection .....	auto recovery

Short circuit protection.....	auto recovery
Over voltage protection .....	latch off
Operating temperature .....	0°C to 50°C
Cooling .....	Free air convection
Storage temperature .....	-40°C to +85°C
EMI .....	meet FCC 20780 "B", EN55022 "B"
Harmonics.....	EN61000-3-2 class D
EMS.....	EN61000-4-2,-3,-4,-5,-6,-11
Safety .....	meet UL60950
	CSA 22.2 NO. 234, EN 60 950

### Mechanical Specifications:



### Notes:

- Dimensions shown in mm (inch) as above. Tolerance: ±0.4mm between mounting holes, and ±0.8mm for other dimension.
- Size:  
83.82 x 133.35 x 38 (mm)
- Connector:  
TB1 -- AC input : Molex 5273-X withdraw 2 pins or equivalent  
TB2 -- DC output : Terminal blocks

[www.sicoenergie.com](http://www.sicoenergie.com)

[info@sicoenergie.com](mailto:info@sicoenergie.com)

S.I.C.O. Energie s.a.s. - Conversion d'énergie & Composants bobinés  
6, rue des Petits Champs – Z.I. Clos aux Pois - 91100 VILLABE ( France )  
Tel : (33) 160 860 011 - Fax : (33) 160 869 020



## General Purpose (Universal)

PFC + 100W  
SNP-U10 Series

#### 4. DC output Pin Assignment

Model No.	1	2	3	4	5	6
SNP-U101	+5V	+5V	GND	GND	+12V	-12V
SNP-U106	+5V	+5V	GND	GND	+12V	
SNP-U107	+12V	+12V	GND	GND	+5V	
SNP-U109	+24V	+24V	GND	GND	+5V	

#### Output Specifications:

MODEL NO.	OUTPUT RAIL	LOAD			VOLTAGE ACCURACY	RIPPLE NOISE	LINE REG.	LOAD REG.
		MIN.	RATED	MAX.				
SNP-U101	+5V	1A	10A	16A	+4.9V~+5.1V	50mVpp	±1%	±1%
	+12V	0.5A	4A	5A	+11.25V~+12.75V	100mVpp	±1%	±3%
	-12V	0A	0.3A	0.5A	-11.0V~-12.0V	100mVpp	±1%	±3%
SNP-U106	+5V	2A	16A	20A	+4.9V~+5.10V	50mVpp	±1%	±1%
	+12V	0A	1A	2A	+11.25V~+12.75V	100mVpp	±1%	±1%
SNP-U107	+12V	0A	8A	10A	+11.8V~+12.2V	100mVpp	±1%	±1%
	+5V	0A	1A	2A	+4.75V~+5.25V	50mVpp	±1%	±1%
SNP-U109	+24V	0A	4A	5A	+23.76V~+24.24V	100mVpp	±1%	±1%
	+5V	0A	1A	2A	+4.75V~+5.25V	50mVpp	±1%	±1%

#### Note:

- Each output can provide up to max. load separately when the power supply starts up. To exceed the max. output power continuously is not allowed.
- At factory, in 60% rated load condition, each output is checked to be within voltage accuracy.
- Line regulation is defined by changing  $\pm 10\%$  of input voltage from nominal line at rated load.
- Load regulation is defined by changing  $\pm 40\%$  of measured output load from 60% rated load at another output set to 60% rated load.
- Ripple & noise is measured by using 15MHz bandwidth limited oscilloscope and terminated each output with a 0.47uF capacitor at rated load and nominal line.
- Hold up time is measured from the end of the last charging pulse to the time which the main output drops down to low limit of main output at rated load and nominal line.
- Efficiency is measured at rated load and nominal line.

[www.sicoenergie.com](http://www.sicoenergie.com)

[info@sicoenergie.com](mailto:info@sicoenergie.com)

S.I.C.O. Energie s.a.s. - Conversion d'énergie & Composants bobinés  
6, rue des Petits Champs – Z.I. Clos aux Pois - 91100 VILLABE ( France )  
Tel : (33) 160 860 011 - Fax : (33) 160 869 020